

Wall mounted socket DUO

Part no. 7636

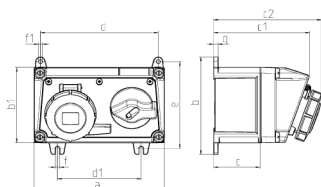


- screw terminals
- for horizontal installation
- switched
- mechanical DUO-interlock
- sockets can be padlocked
- Conductor cross-section min.: 1,5 mm²
- Conductor cross-section max.: 10 mm²

Technical specifications

Ampere	32 A
Poles	5 p
Voltage	400 V
Clock position	6 h
Hertz	50-60 Hz
Connection technology	Screw terminals
Contact	standard
Protection type	IP67
Enclosure material	Plastic
Weight	1720 g
Certifications	EAC

Drawing



Drawing 1 MB 551 Dim. in mm	Amp. Poles	16			32		
		3	4	5	3	4	5
a		225	225	225	225	225	225
b		168	168	168	168	168	168
b1		130	130	130	130	130	130
c		80	80	80	80	80	80
c1		166	166	166	166	166	166
c2		182	185	186	197	197	198
d		204	204	204	204	204	204
d1		145	145	145	145	145	145
e		150	150	150	150	150	150
f		7	7	7	7	7	7
f1		Ø7	Ø7	Ø7	Ø7	Ø7	Ø7
g		8	8	8	8	8	8