

Panel mounted socket

Part no. 75322

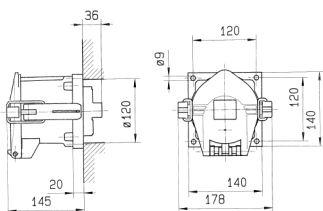


- EcoLine
- aluminum enclosure
- Screw terminals
- seawater resistant products are available on request

Technical specifications

| | |
|-----------------------|-----------------|
| Ampere | 250 A |
| Poles | 4 p |
| Voltage | 500 V |
| Clock position | 7 h |
| Hertz | 50-60 Hz |
| Connection technology | Screw terminals |
| Contact | standard |
| Protection type | IP67 |
| Weight | 3200 g |

Drawing



Drawing
1 MB 384
Dim. in mm