

Panel mounted socket

Part no. 75053

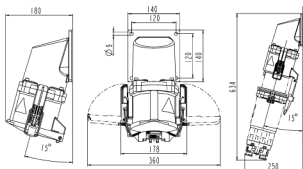


- EcoLine
- aluminum enclosure
- Screw terminals
- 15° inclination
- seawater resistant products are available on request

Technical specifications

Ampere	200 A
Poles	4 p
Voltage	400 V
Clock position	6 h
Hertz	50-60 Hz
Connection technology	Screw terminals
Contact	standard
Protection type	IP67
Weight	3700 g

Drawing



Drawing
1 MB 636
Dim. in mm