

## Wall mounted socket

Part no. 734

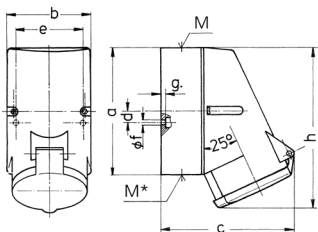


- screw terminals
- with highly heat resistant contact carrier
- nickel plated contacts
- internal fixing
- one cable entry at the top, two blind entries (can be cut out) at the bottom
- enclosure base can be turned 180°
- sockets are designed for adding an auxiliary contact switch

## Technical specifications

|                       |                                                               |
|-----------------------|---------------------------------------------------------------|
| Ampere                | 16 A                                                          |
| Poles                 | 7 p                                                           |
| Voltage               | 400 V                                                         |
| Clock position        | 6 h                                                           |
| Hertz                 | 50-60 Hz                                                      |
| Connection technology | Screw terminals                                               |
| Contact               | highly heat resistant contact carrier, nickel plated contacts |
| Protection type       | IP44                                                          |
| Weight                | 335 g                                                         |

## Drawing



| Drawing                                                       | Amp.                  | 16                         | 32                         |
|---------------------------------------------------------------|-----------------------|----------------------------|----------------------------|
| 1 MB 257                                                      | Poles                 | 7                          | 7                          |
| Dim. in mm                                                    | a                     | 128                        | 128                        |
|                                                               | b                     | 84                         | 84                         |
|                                                               | c                     | 124                        | 138                        |
|                                                               | d                     | 11                         | 11                         |
|                                                               | e                     | 68                         | 68                         |
|                                                               | f                     | 5.3                        | 5.3                        |
|                                                               | g                     | 4                          | 4                          |
|                                                               | h                     | 145                        | 160                        |
|                                                               | M                     | 25                         | 32                         |
|                                                               | M*                    | 2x25 (blind) to be cut out | 2x25 (blind) to be cut out |
|                                                               | Max. cable diam. (mm) | 18                         | 25                         |
| Terminal for cond. cross section (mm <sup>2</sup> ) min.-max. | 1.5                   | 2.5                        |                            |
|                                                               | —4                    | —10                        |                            |