

Wall mounted socket

Part no. 598

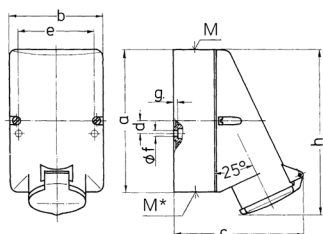


- screw terminals
- internal fixing
- one cable entry at top and two blind entries (can be cut out) at bottom
- lower part of enclosure base can be turned 180°
- receptacles are designed for adding an auxiliary contact switch

Technical specifications

Ampere	32 A
Poles	3 p
Voltage	40-50 V
Clock position	12 h
Hertz	50-60 Hz
Connection technology	Screw terminals
Contact	standard
Protection type	IP44
Weight	278 g

Drawing



Drawing	Amp.	16		32	
		Poles		Poles	
1 MB 137		2	3	2	3
Dim. in mm					
a		128	128	128	128
b		84	84	84	84
c		120	120	120	120
d		11	11	11	11
e		68	68	68	68
f		5.3	5.3	5.3	5.3
g		4	4	4	4
h		146	146	146	146
M		25	25	32	32
M*		2x25 (blind) to be cut out		2x25 (blind) to be cut out	
Max. cable diam. (mm)		18	18	25	25
Terminal for cond. cross section (mm ²) min.-max.		4	4	4	4
		-2x6	-10	-2x6	-10