

Wall mounted socket

Part no. 596

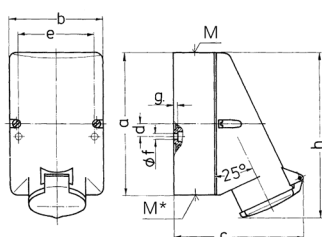


- screw terminals
- internal fixing
- one cable entry at top and two blind entries (can be cut out) at bottom
- lower part of enclosure base can be turned 180°
- receptacles are designed for adding an auxiliary contact switch

Technical specifications

Ampere	32 A
Poles	2 p
Voltage	50 V
Clock position	10 h
Connection technology	Screw terminals
Contact	standard
Protection type	IP44
Weight	184 g

Drawing



Drawing 1 MB 137	Amp.	16		32	
		2	3	2	3
Dim. in mm					
a	128	128	128	128	
b	84	84	84	84	
c	120	120	120	120	
d	11	11	11	11	
e	68	68	68	68	
f	5.3	5.3	5.3	5.3	
g	4	4	4	4	
h	146	146	146	146	
M	25	25	32	32	
M*	2x25 (blind) to be cut out		2x25 (blind) to be cut out		
Max. cable diam. (mm)	18	18	25	25	
Terminal for cond. cross section (mm ²) min.-max.	4	4	4	4	
	-2x6	-10	-2x6	-10	