

Panel mounted socket

Part no. 3507

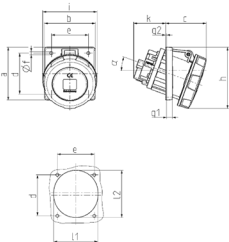


- screw terminals
- X-CONTACT®
- 20° inclination
- products with pilot contact on request

Technical specifications

Ampere	63 A
Poles	5 p
Voltage	500 V
Clock position	7 h
Hertz	50-60 Hz
Connection technology	Screw terminals
Contact	X-CONTACT
Protection type	IP67
Flange	110x106 mm
Fixing hole	85x77 mm
Inclination	20 °
Weight	668 g
Certifications	VDE

Drawing



Drawing 1 MB 298	Amp. Poles	63		
		3	4	5
Dim. in mm	a	110	110	110
	b	106	106	106
	c	85	85	85
	d	85	85	85
	e	77	77	77
	f	6.5	6.5	6.5
	g1	12	12	12
	g2	2	2	2
	h	128	128	128
	i	113	113	113
	k	67	67	67
	l1	92	92	92
	l2	98	98	98
	a	20	20	20
Terminal for cond. cross section (mm²) min.-max.		6 6	6 6	6 6
		-25 -25	-25 -25	-25 -25