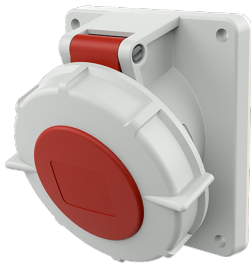


## Panel mounted socket

Part no. 2459

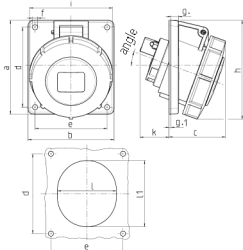


- screw terminals
- highly heat resistant contact carrier
- nickel plated contacts
- 20° inclination

## Technical specifications

Ampere	16 A
Poles	7 p
Voltage	400 V
Clock position	6 h
Hertz	50-60 Hz
Connection technology	Screw terminals
Contact	nickel plated contacts, highly heat resistant contact carrier
Protection type	IP67
Flange	100x92 mm
Fixing hole	85x77 mm
Inclination	20 °
Weight	256 g

## Drawing



Drawing 1 MB 251	Amp. Poles	16		32	
		7		7	
Dim. in mm	a	100		100	
	b	92		92	
	c	62		66	
	d	85		85	
	e	77		77	
	f	5,5		5,5	
	g	8		8	
	g.1	2		2	
	h	105		113	
	i	96		110	
	k	39		54	
	l	65		72	
	ll	72		85	
	o	20°		20°	
Terminal for cond. cross section (mm²) min.-max.		1,5		2,5	
		-4		-10	