

## Panel mounted socket

Part no. 2296

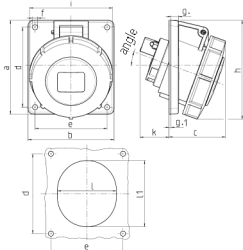


- screw terminals
- highly heat resistant contact carrier
- nickel plated contacts
- 20° inclination

## Technical specifications

|                       |   |
|-----------------------|---|
| Ampere                | 16 A  |
| Poles                 | 7 p   |
| Voltage               | 500 V   |
| Clock position        | 7 h   |
| Hertz                 | 50-60 Hz  |
| Connection technology | Screw terminals   |
| Contact               | highly heat resistant contact carrier, nickel plated contacts |
| Protection type       | IP67  |
| Flange                | 100x92 mm   |
| Fixing hole           | 85x77 mm  |
| Inclination           | 20 °  |
| Weight                | 256 g   |

## Drawing



| Drawing  | Amp.  | 16        | 32         |
|--|-------|-----------|------------|
| 1 MB 251   | Poles | 7         | 7          |
| Dim. in mm                                       | a     | 100       | 100        |
|  | b     | 92        | 92         |
|  | c     | 62        | 66         |
|  | d     | 85        | 85         |
|  | e     | 77        | 77         |
|  | f     | 5,5       | 5,5        |
|  | g     | 8         | 8          |
|  | g1    | 2         | 2          |
|  | h     | 105       | 113        |
|  | i     | 96        | 110        |
|  | k     | 39        | 54         |
|  | l     | 65        | 72         |
|  | ll    | 72        | 85         |
|  | o     | 20°       | 20°        |
| Terminal for cond. cross section (mm²) min.-max. |       | 1,5<br>—4 | 2,5<br>—10 |