

## Wall mounted socket

Part no. 1831

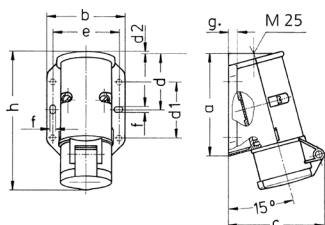


- screw terminals
- external fixing
- one cable entry at top and one blind cable entry (can be cut out) at the rear side

## Technical specifications

|                       |                 |
|-----------------------|-----------------|
| Ampere                | 16 A            |
| Poles                 | 2 p             |
| Voltage               | 40-50 V         |
| Clock position        | 12 h            |
| Hertz                 | 50-60 Hz        |
| Connection technology | Screw terminals |
| Contact               | standard        |
| Protection type       | IP44            |
| Weight                | 189 g           |

## Drawing



| Drawing<br>1 MB 294   | Amp.<br>Poles | 16  |     | 32  |     |
|---|---------------|-----|-----|-----|-----|
|   |               | 2   | 3   | 2   | 3   |
| Dim. in mm  | a             | 96  | 96  | 96  | 96  |
|   | b             | 73  | 73  | 73  | 73  |
|   | c             | 90  | 90  | 90  | 90  |
|   | d             | 53  | 53  | 53  | 53  |
|   | d1            | 52  | 52  | 52  | 52  |
|   | d2            | 2   | 2   | 2   | 2   |
|   | e             | 62  | 62  | 62  | 62  |
|   | f             | 5.3 | 5.3 | 5.3 | 5.3 |
|   | g             | 8   | 8   | 8   | 8   |
|   | h             | 129 | 129 | 129 | 129 |
| Terminal for cond. cross section (mm <sup>2</sup> ) min.-max. |               | 4   | 4   | 4   | 4   |
|   |               | -10 | -10 | -10 | -10 |