

## Panel mounted socket with TwinCONTACT

Part no. 1701

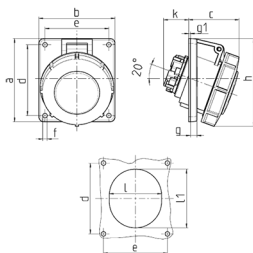


- screwless spring terminals
- suitable for through wiring
- 20° inclination

### Technical specifications

|                       |                         |
|-----------------------|-------------------------|
| Ampere                | 16 A                    |
| Poles                 | 3 p                     |
| Voltage               | 230 V                   |
| Clock position        | 6 h                     |
| Hertz                 | 50-60 Hz                |
| Connection technology | Screwless - TwinCONTACT |
| Contact               | standard                |
| Protection type       | IP67                    |
| Flange                | 73.5x64 mm              |
| Fixing hole           | 60x52 mm                |
| Inclination           | 20°                     |
| Weight                | 120 g                   |
| Certifications        | VDE                     |

### Drawing



| Drawing<br>1 MB 466 | Amp.<br>Poles  | 16   |     |     | 32  |     |     |
|---------------------|--|------|-----|-----|-----|-----|-----|
|                     |  | 3    | 4   | 5   | 3   | 4   | 5   |
| Dim. in mm          | a  | 73.5 | 100 | 100 | 100 | 100 | 100 |
|                     | b  | 64   | 92  | 92  | 92  | 92  | 92  |
|                     | c  | 52   | 60  | 62  | 66  | 66  | 66  |
|                     | d  | 60   | 85  | 85  | 85  | 85  | 85  |
|                     | e  | 52   | 77  | 77  | 77  | 77  | 77  |
|                     | f  | 5.5  | 5.5 | 5.5 | 5.5 | 5.5 | 5.5 |
|                     | g  | 7    | 8   | 8   | 8   | 8   | 8   |
|                     | g-1  | 2    | 2   | 2   | 2   | 2   | 2   |
|                     | h  | 84   | 100 | 106 | 109 | 109 | 113 |
|                     | k  | 31   | 31  | 31  | 44  | 44  | 54  |
|                     | l  | 52   | 55  | 65  | 70  | 70  | 73  |
|                     | l1   | 60   | 63  | 72  | 82  | 82  | 85  |
|                     | Terminal for cond. cross<br>section (mm <sup>2</sup> ) min.-max. | 1.5  | 1.5 | 1.5 | 2.5 | 2.5 | 2.5 |
|                     |  | -4   | -4  | -4  | -6  | -6  | -6  |