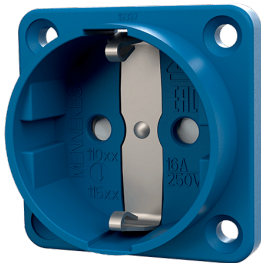


Panel mounted receptacle SCHUKO®

Part no. 11581

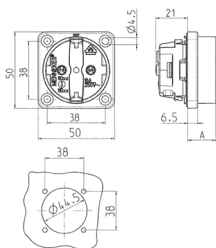


- without hinged lid
- 3 screw terminals as connecting terminals for 1.5 – 2.5 mm²
- other colours on request

Technical specifications

| | |
|-----------------------|-----------------|
| Ampere | 16 A |
| Poles | 2 p+PE |
| Voltage | 230 V |
| Connection technology | Screw terminals |
| Contact | standard |
| Protection type | IP20 |
| Shutter | true |
| Flange | 50x50 mm |
| Fixing hole | 38x38 mm |
| Enclosure material | Plastic |
| Weight | 40 g |
| Certifications | EAC, VDE |

Drawing



| Drawing 1 MB 450 Dim. in mm | Dim. A |
|-----------------------------------|--------|
| SCHUKO | 19.0 |
| French/Belgian standards | 15.8 |
| Danish standards | 15.8 |