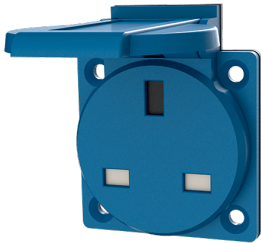


Grounding-type panel mounted socket

Part no. 10718

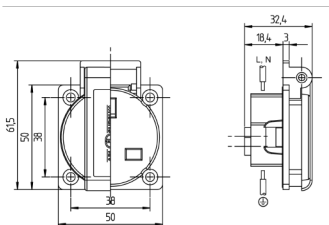


- British standard
- with hinged lid
- 3 screw terminals
- socket cannot be combined with enclosure base part no. 10714, 10715 or 10716

Technical specifications

Ampere	13 A
Poles	2 p+PE
Voltage	230 V
Connection technology	Screw terminals
Contact	standard
Protection type	IP44
Shutter	true
Flange	50x50 mm
Fixing hole	38x38 mm
Weight	80 g

Drawing



Drawing
1 MB 584

Dim. in mm